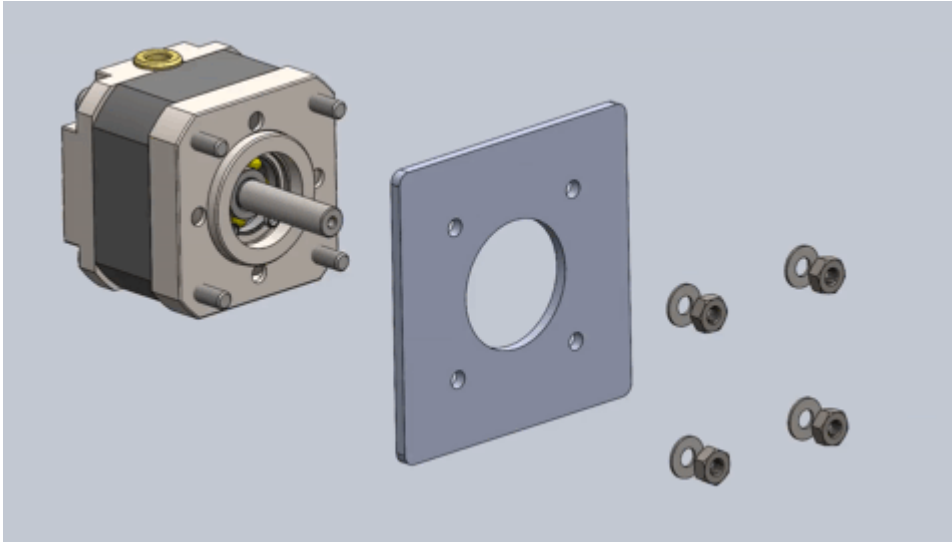

Installation

Use the extended screws for mounting but do not adjust them. Take normal vacuum precautions, avoid creating trapped volumes when mounting the motor and obstruct as few as possible of the pumping holes in the end faces. The location spigot projecting from the face of the motor is accurately concentric with the shaft and intended for precise location in a recess.



Warranty is void if screws are tampered with.

