

# Updating SMD3 or SMD4 firmware outside of AML Device Control Software

Instructions for manually updating SMD3 or SMD4 firmware when doing so through device control is not possible.

- [Procedure](#)

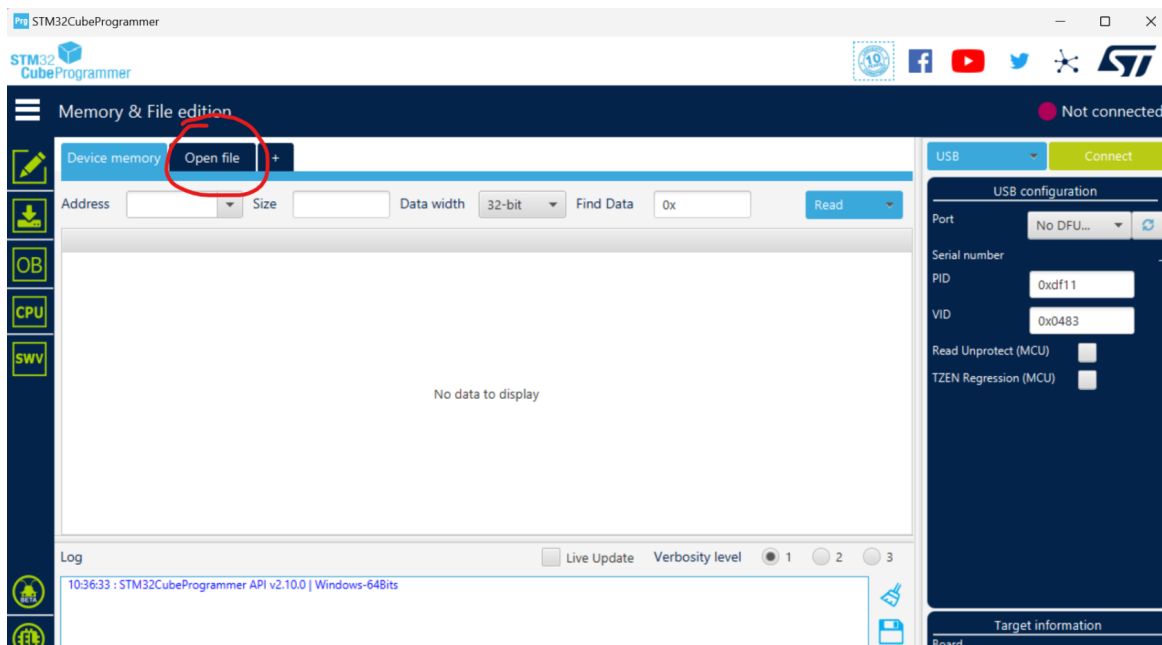
# Procedure

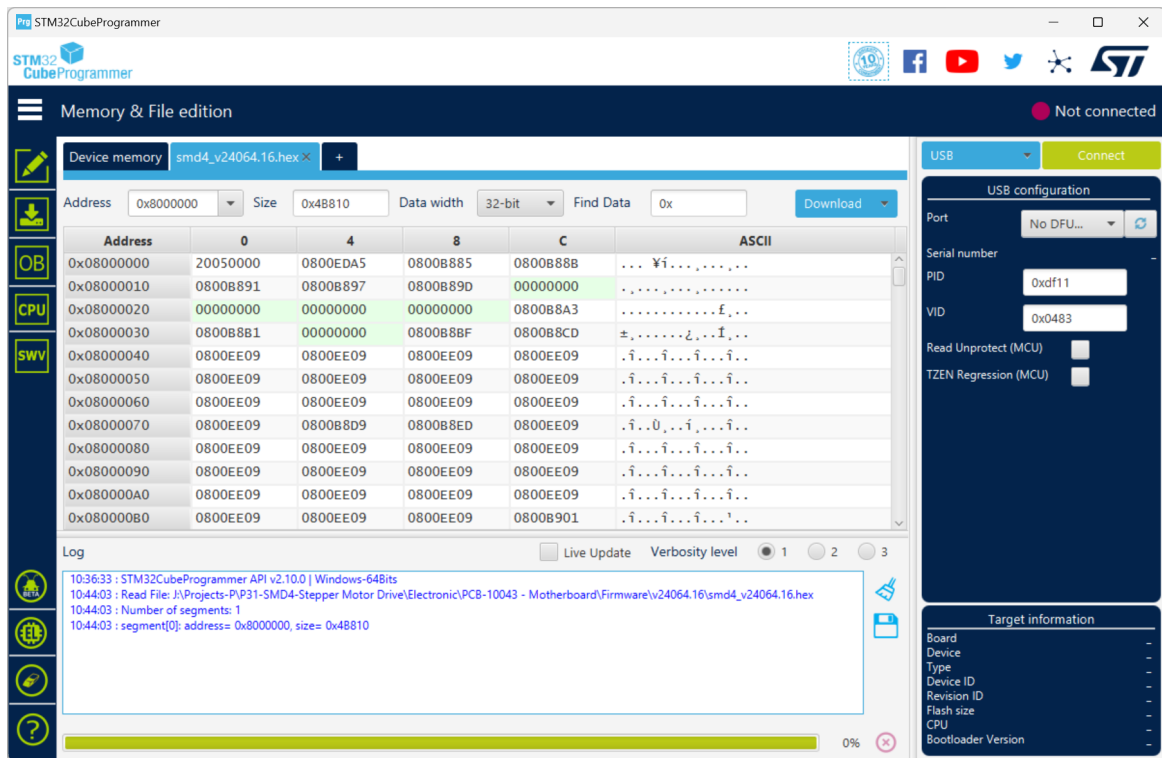
## Background

If a firmware initiated in AML device control goes wrong, it may not be possible to recover using AML Device Control software. Use this procedure to manually update the firmware.

## 0. Install software tools and prepare firmware

- Download the STM32 cube programmer tool from <https://www.st.com/en/development-tools/stm32cubeprog.html> picking the correct version for your computer from the list at the bottom of the page. Install the tool then open it.
- Download the firmware file image for your product. Visit this page <https://arunmicro.com/downloads/product/>, find your product, then download the latest firmware image for it. For example, for SMD4, browse to 'SMD4/fw' then pick the latest revision. Firmware files are named 'yyddd.b' where 'yy' is the year, 'ddd' is a day number, and 'b' is a build number.
- Open STM32 cube programmer, click open file and choose the firmware image file you just downloaded



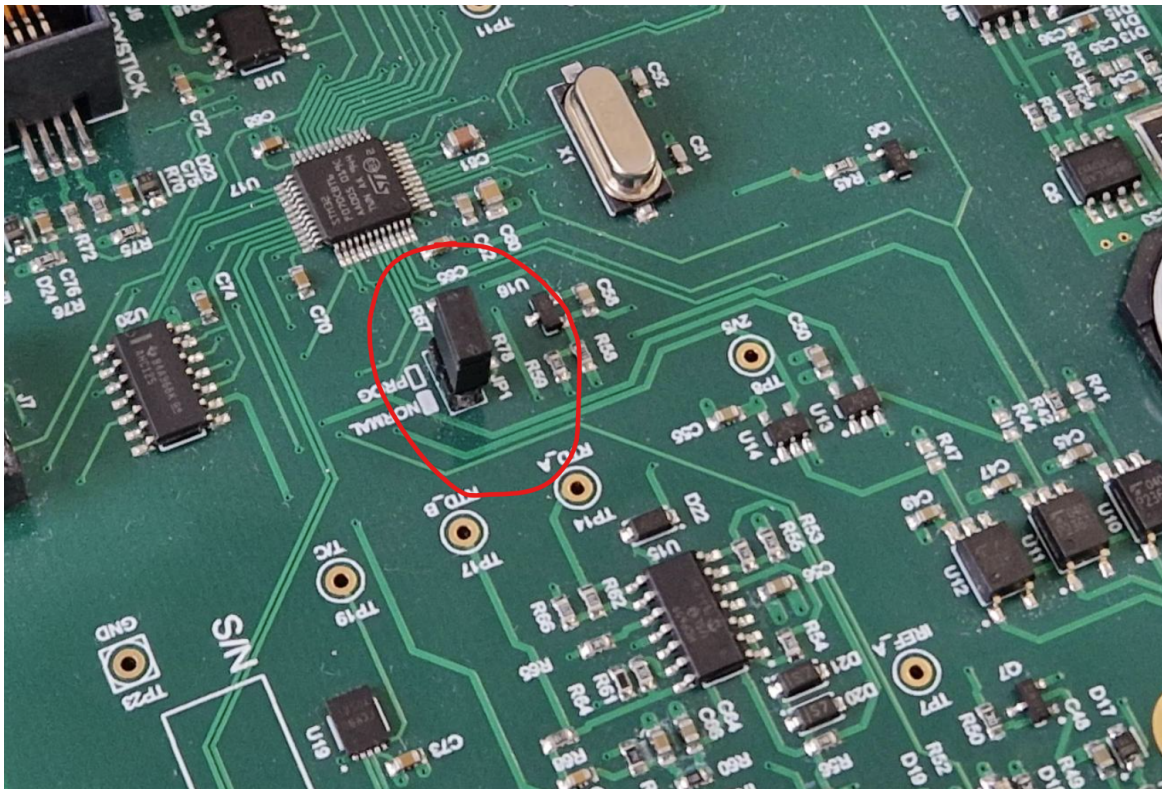


## 1. Configure the hardware

The hardware must be in bootloader mode to allow firmware update. This involves installing or removing a jumper on the devices PCB.

For SMD3:

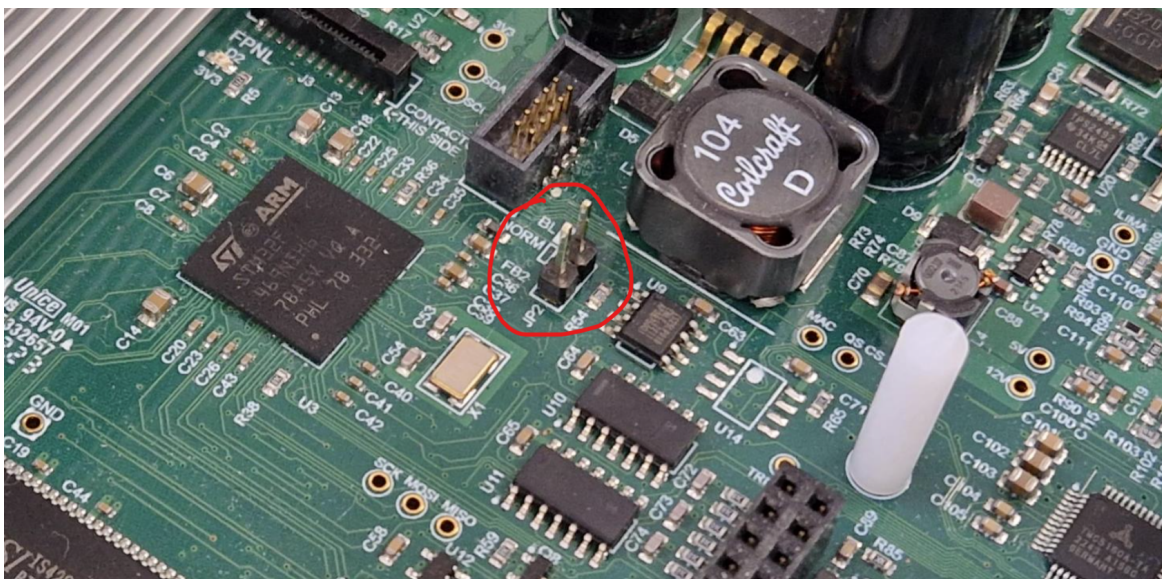
- Unplug power lead from the device
- Remove the lid by unscrewing the 4 screws securing it
- Locate the boot jumper, marked "JP1" and unplug the black jumper



For SMD4:

- Unplug power lead from the device
- Unscrew the 4 screws securing the front panel, then remove it, then the front plastic bezel, and finally slide out the lid/top portion of the enclosure
- Locate the boot jumper pins, marked "JP2" and short them using a jumper plug.

*If a jumper plug is not available, tweezers or small pliers can be used taking great care to only short the pins indicated. If using this method, note that the jumper only needs to be shorted during power up, not during the whole procedure.*



## 2. Power up the device

For SMD4:

- If using tweezers or pliers to short the boot jumper, do so now

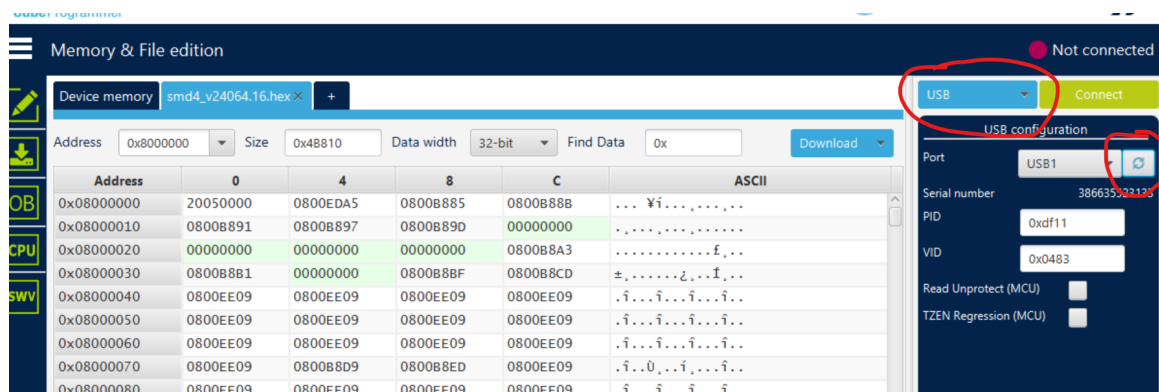
Then

- Plug in power lead and power up device
- For SMD4, remove the boot jumper, or stop shorting the boot pins. For SMD3 plug the boot jumper back in again.

## 3. Update the firmware

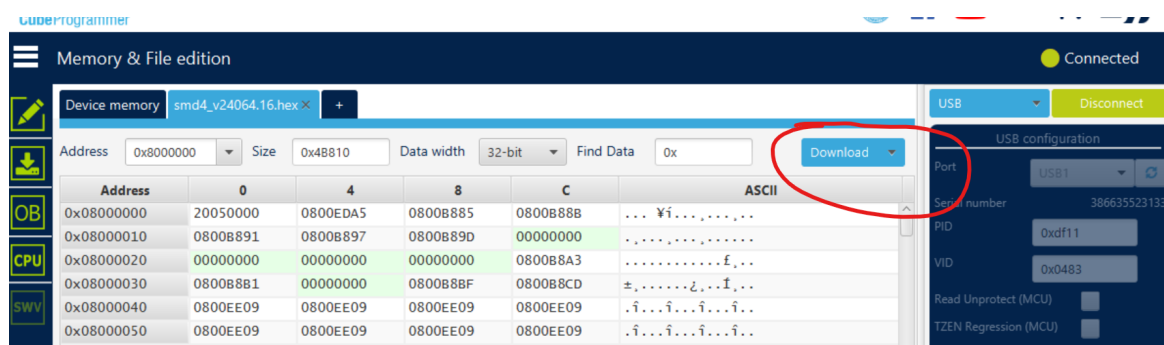
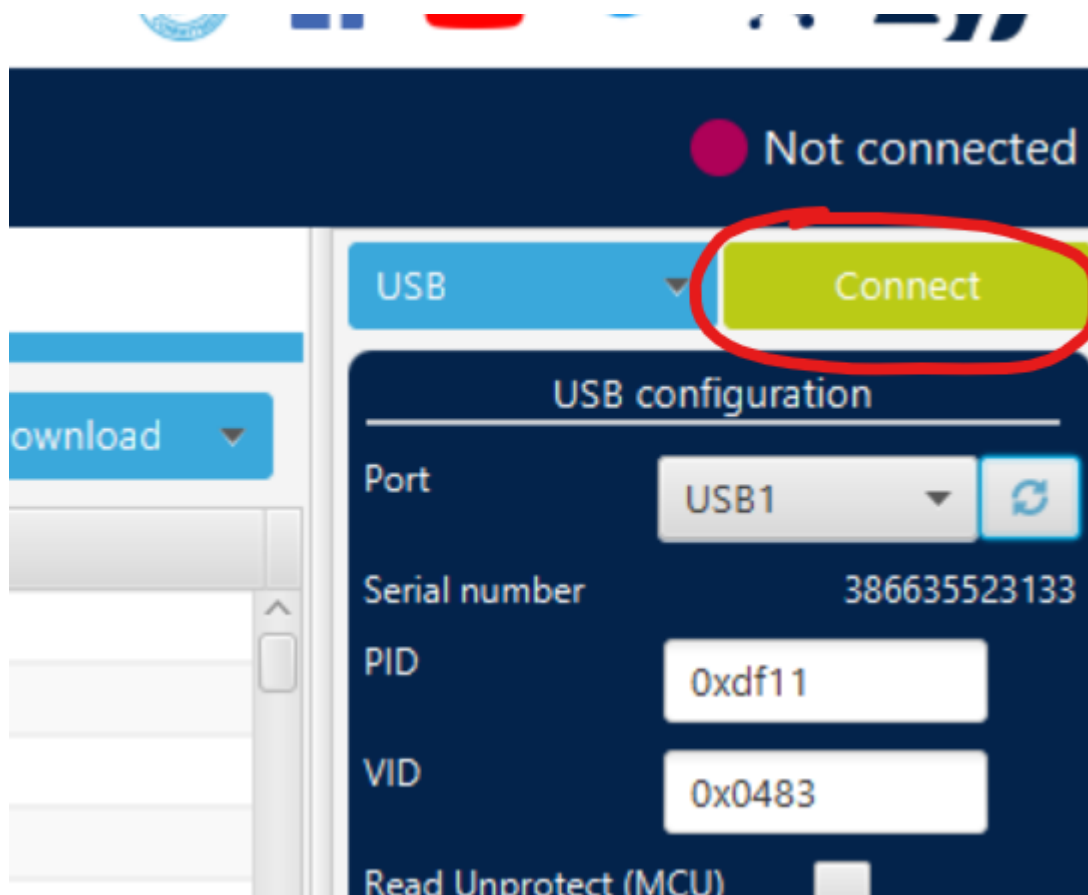
In STM32 Cube programmer software you opened earlier:

- On the right hand side, choose port 'USB' then click the refresh button. The port field will then read 'USB1' for example, and the 'Serial number' field will populate. Note this serial number will not match your product serial number. Do not change any other settings from their default values.

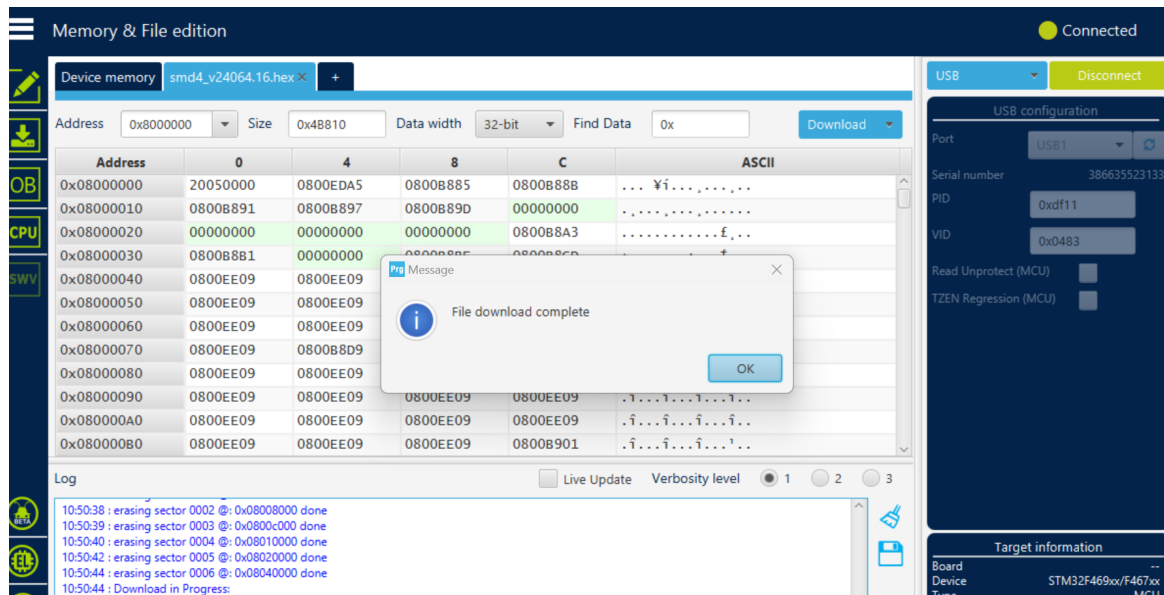


- Finally, click connect, then download





- After a while, the process should complete, then click OK to finish



- Finally, power cycle the device. It should then boot up as normal, with the new firmware installed.

## Troubleshooting

- **Device does not boot up again after firmware update completes**
  - Is the boot jumper fitment correct? For SMD4, the boot jumper must be removed to boot normally, for the SMD3 it must be fitted
  - Did you download the right firmware image file?